

Concrete Testing Systems

w + b



walter+bai ag Testing Machines

Industriestrasse 4, 8224 Löhningen, Switzerland, Tel. +41 (0)52 687 25 25, Fax +41 (0)52 687 25 20

E-Mail: info@walterbai.com / Internet: <http://www.walterbai.com>

Compact Compression Testing Machines Series DC 2'000 – 3'000 kN

The DC series is a compact family of compression testing machines. The frame is a high stiffness 4 column construction with single acting ram, lower fixed platen and upper spherically seated platen with oil filled ball seat assembly.

The chassis contains in the lower part the integrated hydraulic power pack with servo-valve assembly and in the upper part the digital controller and strip printer.



Compression Testing Machines Series D 3'000 – 10'000 kN

This rigid four-column load frame with single acting ram, lower fixed platen and upper spherically seated platen with oil filled ball seat. The columns are chromium plated and the piston is hardened and micro finished. The machine is precision aligned and cylinder test conform. These testing machines can be connected to the free standing 19" control console with low noise power pack or to the measuring and weighting system each with integrated low noise power pack.

Compression Testing Machines Series DV 3'000 – 6'000 kN

The DV models features adjustable crosshead facility by two long stroke actuators and passive clamping system onto the hardened and chromium plated columns. It allows quick, easy and accurate positioning of upper crosshead specially useful when sample heights are often different.

The load frames have superior axial and lateral stiffness and precision aligned for advanced testing of building materials.



Combined Compact Compression & Bending Testing Machines Series DBC

The DBC combined series is a compact family of compression testing machines. The compression frame has a single acting ram, lower fixed platen and upper spherically seated platen with oil filled ball seat assembly. The chassis contains in the lower part the integrated hydraulic power pack with servo-valve assembly and in the upper part the digital controller and strip printer. Capacities: Compression 2'000 – 4'000 kN, Bending 100 – 300 kN.

w + b

walter+bai ag Testing Machines

Industriestrasse 4, 8224 Löhningen, Switzerland, Tel. +41 (0)52 687 25 25, Fax +41 (0)52 687 25 20

E-Mail: info@walterbai.com / Internet: <http://www.walterbai.com>



Combined Compression & Bending Testing Machines Series DB

The DB combined testing machines are rigid four-column load frames. The lower compression plate is fixed platen and upper spherically seated with oil filled ball seat assembly. The columns are chromium plated and the piston is hardened and micro finished. The flexural test space uses double acting actuators, providing a quick controlling what also allows testing reinforced concrete. Capacities: Compression 2'000 - 4'000 kN, Bending 100 - 300 kN.

Bending Testing Machines Series B 20 – 300 kN

The B models are very rigid load frames with a double acting actuator for a wide range of applications. The load frame is equipped with a precision flat load cell for direct force measurement to reach class 0.5. The bending table consists of one fix and one swivelling support with continuously adjustable facility. The upper support is also tiltable with an easy to change support to change from 3 point to 4 point bending. An anti-torsion bolt guaranties parallelism between the edges.



Bending Testing Machines Series BV 20 – 1'000 kN

The BV models are very two or four column load frames with a double acting actuator. The standard force rating of this series ranging from 20 kN up to 1'000 kN. The large distance between columns allows to test not only longs specimens but also whole plates. With hydraulic adjustable upper crosshead through two long stroke cylinders with mechanical or hydraulic clamping to facilitate quick, easy, and accurate positioning.



Creep Testing Machines Series HKB

Tests can be carried out either on a single sample or on several samples in series. The load cylinder is put under pressure by a hand or motor driven pump. The force can be read of the pressure gauge or electric read out and is kept constant by a compressed gas storage system.

In addition we provide mechanical or electronic deformation measurement equipment.



w + b

**Control Console
Series SP
with Measuring and Weighting System
Series W – MS**

This control console with measuring and weighting system in connection with Series D, Series DV or Series DB is the system for the highest demands in concrete testing. This system combines accurate, rapid and productive testing with ergonomic working. This system is used to determine specimens weight and dimensions of cubes and cylinders.

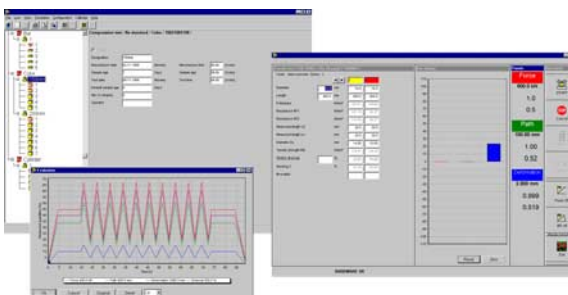


**19" Standard Control Console
Series NS 19 / PA**

The Standard Consoles is a modular system which can be configured according to different specifications to suits your specific needs. It is possible to connect more than one machine to one control console. Upper Part: All necessary periphery equipment like personal computer, screen, keyboard, digital controller, electrical switch board with push button and emergency-stop a.s.o. The hydraulic power pack is integrated in the base of the console.

**Digital Closed Loop Controller
Type DIGICON 2000**

The DIGICON is an extendable system that can control up to four different machines in closed loop force, displacement, deformation or external mode. The system itself is free programmable and supports all widely used sample bodies with no dimensional limitations. Applications: Integrated in 19" Standard Control Console with PC, Printer and Hydraulic Power Pack, 19" Stand-Alone Controller Unit or Stand-Alone Unit on Table with PC and Printer.



**Building Material Testing Software
PROTEUS**

Test control, data collection and evaluation and reporting capabilities has never been as user-friendly as it is now when using this application software PROTEUS. This test software offers you both, rapid and productive testing but also specialised applications for advanced testing requirements. The high degree of flexibility brought by template generation and by the test editor allows to configure the program according to the exact specifications needed.

w + b