

MICROSCOPY



IMM 901 Inverted Metallurgical Microscope



IMM 901 with Nikon Digital Camera

Specifications

- BasicMagnifications** : 100x - 1000x
Eyepieces : WF 10x eyepieces paired (field of view Ø16mm)
Objectives : 10x/0.25 (W.D. 6.7mm), 25x/0.40 (W.D. 0.76mm)
40x/0.65 (W.D. 0.67mm), 100x/0.25 (oil) (W.D. 0.3mm)
Stage : Mechanical stage 200 x 152mm travel with right hand
Coaxial dropdown controls, movable range 15 x 15mm
Focusing : Coaxial low position coarse & fine focus controls
graduated to 2 microns per division.
Illumination : 6V 20W adjustable light sources with halogen lamp
Size&Weight : 540L x 195W x 320H mm & 10kg
Order No : 60 01

Optional Accessories

- WF 12.5x eyepiece (10mm diameter) / **Order No: 60 11**
WF 10x with reticles (0.01 mm division) / **Order No: 60 12**
Photo attachment set for digital camera (Nikon Coolpix series) / **Order No: 60 91**



IMM 901 Inverted Metallurgical Microscope

PST 901 Trinocular Stereo Zoom Microscope



PST 901 with Nikon Digital Camera and Mechanical X-Y Stage

Specifications

- BasicMagnifications** :6.5x - 45x
Eyepieces :WF 10x, paired
Objectives :6.5x - 45x
Stage :Trinocular zoom head and Post Stand
Fluorescence ring illuminator
Focusing :Rack and pinion system, with anti-static PVC dust cover
Size&Weight :170W x 250D x 55H mm & 6.0 kg
Order No :60 02
Optional Accessories
Photo attachment for NIKON CP900 series with P6.3x lens
Order No: 60 92
Stage micrometer for PST, Reticle, 5 mm with 100 divisions
Order No: 60 23
Mechanical Stage for PST 901
Order No: 60 43



PST 901 Trinocular Stereo
Zoom Microscope

MDB Image Processing and Analysis Systems

MDB Image Processing and Analysis Systems increase your laboratory productivity with cost effective Documentation, Image Archiving, Measurement capability and Report generation. Grain Size Measurement and Quantitative Phase Analysis are also possible. The system consists of; High Resolution Color CCD Camera, Frame Grabber PCB, C-Mount Adapter, Eyepiece Adapter and software package.

MDB 200 Image Archiving, Measurement and Report Generation

The image is digitized and saved by clicking on the capture icon. Image contrast, brightness, color etc. can easily be adjusted. A full screen gallery function allows a quick overview of all images. Basic dimensional measurements, such as; point to point, angles, parallel beam, circles, polygon etc. can be performed on the MDB 200. Calibration is easily made by using the calibration slide. Comparison of live images to stored images is possible. Company samples or international standards can be used as references. Report preparation is an easy task on the MDB 200. Stored data is integrated with the image and saved under a certain work number. For your specific needs, tailor-made report format is possible.

Order No: 65 01

MDB 230 Grain Size Measurement, Quantitative Phase Determination, Image Archiving and Report Generation.

An ergonomic tool for the visual comparison of metallographic specimens under a microscope. Standardized metal sections, or ones which you have produced yourself, are shown together with the test image.

Surface Determination is for analyzing ground materialographic sections and in particular it is for quantitative phase determination. Various components of the structure are evaluated using grey-scale detection (either of the whole picture or an interactively pre-selected area). Using layer technology, up to 6 phases can be analysed. Fully automatic drafting of reports

using MS Excel tops off the range on offer. Determination of Grain Size according to DIN 50601 and ASTM-E112 or, as alternative,

an independent output of the measured values by means of an automatic image analysis. Fully automatic categorization, false colour visualization, comprehensive documentation of the measured values and histogram production are also available.

Order No:65 02

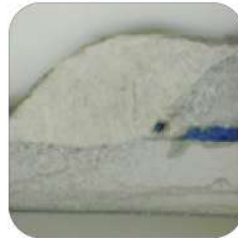
MDB 250 Measuring Tools, Grain Size Measurement, Quantitative Phase Determination, Image Archiving and Report Generation.

MDB 250 is a combination of both MDB 200 and MDB 230.

Order No: 65 03



MDB 230 Image Analysis System



Measurement of welding



Microstructure of nodular cast irons



Metkon Instruments Ltd.

Demirtas Organize San. Bölgesi Ali Osman Sönmez Cd. No:14 Bursa / TURKEY

Tel: +90.224.261 18 40 Fax: +90.224.261 18 44

E-Mail: metkon@metkon.com Web: www.metkon.com

Distributor:

Cat. E 05