



**M5C 030/300 G3**

**Universal hardness  
testing machines  
of the 3<sup>rd</sup> generation**

**EMCO-TEST**  
YOUR FACTOR OF SAFETY.

## Basic machine:

Macro-universal hardness tester for standardized test methods such as Brinell, EN ISO 6506 / ASTM E10 • Vickers, EN ISO 6507 / ASTM E92 • Rockwell, EN ISO 6508 / ASTM E18.

Testing and evaluation cycle through fully automatic image analysis for Brinell and Vickers, respectively manual evaluation similar to matt screen systems.

Automatic focussing.

Test load ranges: 196 – 29400 N

Machine body made of cast iron and ergonomically designed.

Test anvil movement via hand wheel (M5C 030 G3) or motor-driven test anvil (M5C 300 G3).

Electronic test forces via load cell, closed loop and machine software.

Selection of test method, tolerance limits and testing cycle time via LCD operating surface with touch screen.

Objectives and indenters at the motor-driven swivelling body can be changed manually.

According to the test method selected, objectives with LED lighting and automatic brightness and contrast control can be stored by the software (important for various material surfaces).

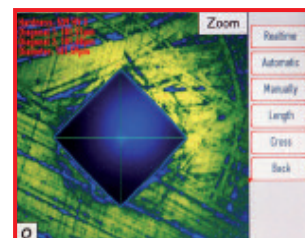
Conversion of hardness values according to EN ISO 18265 (DIN 50150).

The software includes extensive data management (import/export function) and statistics functions.

With the new generation of M5C hardness testing machines even the occasional testing of components is made very easy.

## Advantages of the 3<sup>rd</sup> generation:

- Very easy to operate by optimum user guidance and self-explanatory menus.
- Easy selection of all settings via drop-down menus
- The hardness tester automatically saves test parameters and test results.
- Clearly structured data management with efficient import and export functions.
- Report forms ready for printing via USB interface.
- Possibility to select user groups with different authorizations.
- Compatible to software ecos basis.



## Technical data:

TFT LCD monitor 8.4“, 170 x 130 mm, 800 x 600 pixel.

Operation via touch screen with large and clearly arranged operating elements.

LCD monitor to display the test indentation from the automated image analysis(e. g. Vickers, Brinell), serving as menu box for all dialogues, settings and notes and to display the Rockwell measured values.

High Resolution 1/2“ camera integrated in the system, 1280 x 1024 pixel.

Adjustable LED lighting for all objectives (storable according to test method).

2 USB interfaces, 1 RS232 interface and 1 RJ45 100 MBit interface (Ethernet) for the data transfer to PC or network

Possibility to connect a printer to the USB interface to print reports (direct printout from the hardness testing machine without additional PC).

Objectives with magnifications: 18x / 35x / 70x / 130x

Testing height and mount capacity: maximum 415 mm testing height – M5C 030 G3 maximum 280 mm mount capacity – both types  
maximum 500 mm testing height – M5C 300 G3

Power supply: 230 V / 50/60 Hz  
110 V / 50/60 Hz

## EMCO-TEST Prüfmaschinen GmbH

A-5431 Kuchl-Salzburg/Austria

Brennhoflehen-Kellau 174

Telefon +43 62 44 20 4 38, Fax +43 62 44 20 4 38-8

E-Mail: office@emcotest.com, www.emcotest.com

**EMCO-TEST**  
YOUR FACTOR OF SAFETY.